

HS1 30(CE)

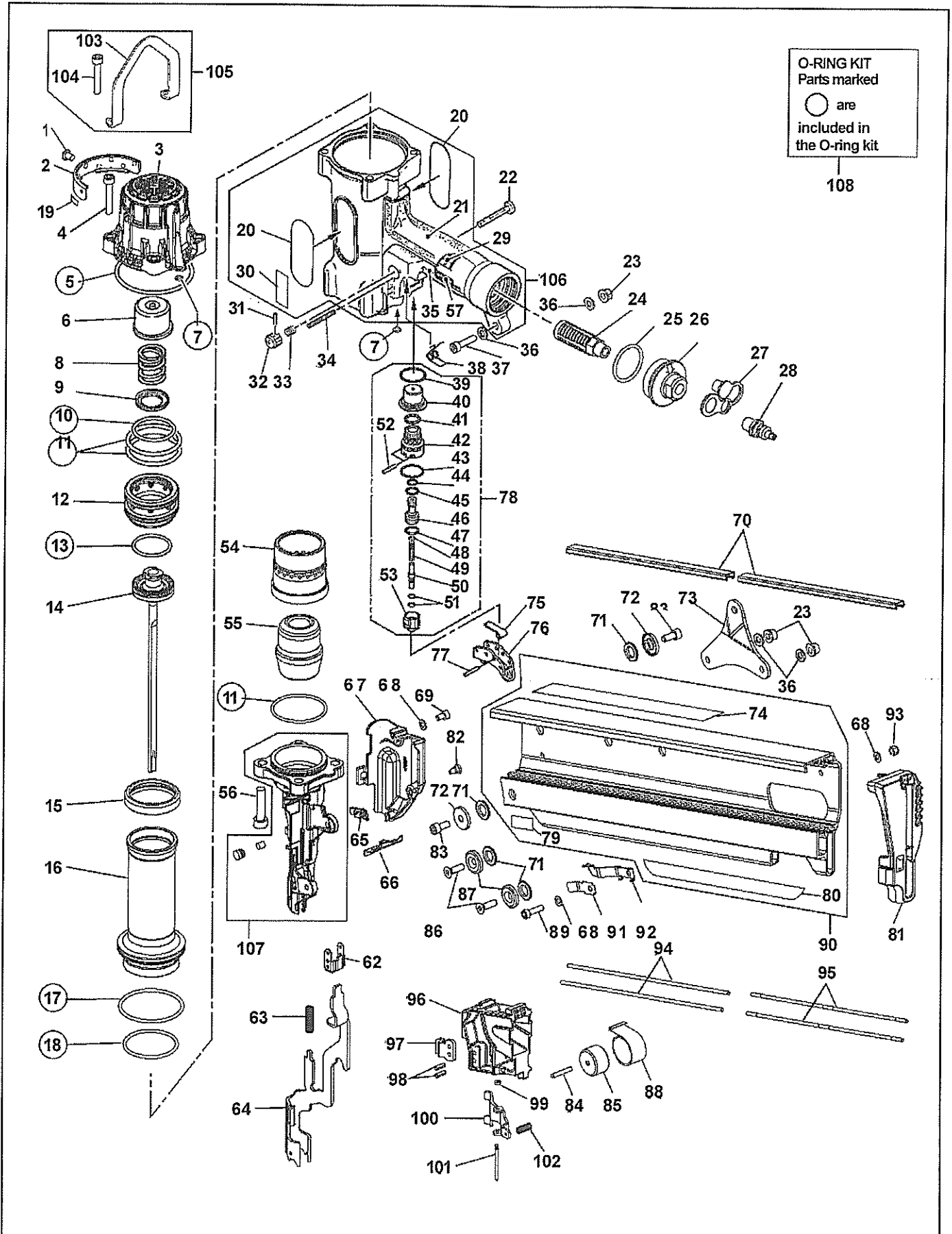
EXPLODED
VIEW AND SPARE
PARTS LIST

EINZELTEILDAR-
STELLUNG UND
ERSATZEILLISTE

SCHEMA ECLATE ET
LISTE DES PIÉCES
DE RECHANGE

ESPLOSO DEI
COMPONENTI DE
ELENCO DELLE
PARTI DI RICAMBIO

DESPIECE DE LA
MAQUINA Y LISTA
DE RECAMBIOS



HS1 30(CE)

ITEM NO.	PART NO.	MATERIAL	ENGLISH
1	BB41 701	Steel	SPECIAL SCREW M6X8
2	HS1 0817	Steel	EXHAUST COVER
3	HS70077	Aluminum,Steel	CYLINDER CAP UNIT
4	BB40227	Steel	HEXSOCHDCAPSCREW M6X35
5	HH14040	Rubber	O-RING ARP568-040
6	HN10275	Urethane	PISTON STOP
7	HH1 1120	Rubber	O-RING ARP568-009 CN65079
8	KK2351 6	Steel	COMP SPRING 3516
9	CN31 892	Steel	SPRING SHEET
10	HH1 9708	Rubber	O-RING 1A2.6X39.5
11	HH1 1157	Rubber	O-RING ARP568-1 36
12	HN1 0274	Polyacetal	HEAD VALVE PISTON
13	HH11803	Urethane	O-RING P36
14	HS70080	Steel	MAIN PISTON UNIT
15	HN10278	Urethane	CYLINDER SEAL
16	HS10809	Aluminum	CYLINDER A
17	HH1 2108	Rubber	O-RING AG60
18	HH1 2102	Rubber	O-RING AG50
19	HS10831	Steel	FILTER
20	HS10825	PET	NAME LABEL (HS130CE)
21	HN1 0310	PVC	GRIP COVER A
22	CN34088	Steel	TRIGGER LOCK LEVER
23	CC51002	Steel	NUT M6
24	TA17024	Polyacetal	END CAP FILTER KM-23
25	HH12118	Rubber	O RING 1AG35
26	HS10802	Aluminum	END CAP
27	HN1 0316	Vinyl acetate	END PLUG CAP
28	TT05416	Steel	AIR PLUG
29	HN1 0322	GEL	BUFFER SEAT A
30	HN1 0757	PET	TRIGGER LOCK SEAL
31	FF21201	Steel	PIN 2.5X10
32	HN10327	Polyacetal	TRIGGER LOCK DIAL
33	KK23507	Steel	SPRING 3507
34	FF21235	Steel	SPRING PIN 3X30
35	HN1 0311	PVC	GRIP COVER B
36	EE31105	Steel	WASHER 1-6
37	BB40701	Steel	HEXSOCHDCAPSCREW M6X25
38	KK33189	Steel	TORSION SPRING 3189
39	HH1 1159	Rubber	O-RING ARP568-01 6
40	HN1 0326	Aluminum	TRIGGER VALVE CAGE
41	HH1 1151	Rubber	O-RING ARP568-01 3
42	HN1 0283	Aluminum	TRIGGER VALVE HOUSING
43	HH1 1138	Rubber	O-RING AP20
44	HH11119	Rubber	O-RING AP6
45	HH11802	Urethane	O-RING P7
46	CN33627	Polyacetal	PILOT VALVE
47	HH11113	Rubber	O-RING AP9
48	CN31436	Aluminum	PILOT OLIFICE
49	KK23814	Steel	COMPRESSION SPRING 3814
50	HN1 0328	Steel	TRIGGER VALVE STEM
51	HH1 1901	Rubber	O-RING 1.4 X 2.5
52	FF30161	Stainless Steel	PIN 161
53	HN1 0284	Steel	TRIGGER VALVE CAP
54	HS10810	Aluminum	CYLINDER B
55	HS10815	Rubber	BUMPER
56	BB40445	Steel	M8 X 35 HSHC SCREW
57	HN1 0323	GEL	BUFFER SEAT B
58			
59			

HS1 30(CE)

ITEM NO.	PART NO.	MATERIAL	ENGLISH
60			
61			
62	HN10287	Steel	ARM GUIDE UNIT
63	KK29024	Steel	COMPRESSION SPRING 9024
64	HS10814	Steel	CONTACT ARM
65	HS10812	Rubber	MAGAZINE GUIDE B
66	HS10811	Rubber	MAGAZINE GUIDE A
67	HS10816	Nylon	ARM COVER
68	EE31121	Steel	WASHER 1-5(BLACK)
69	BB40456	Steel	HEXSOCHDCAPSCREW M6X8
70	HS10799	Stainless Steel	NAIL COVER
71	HS10804	Rubber	RUBBER WASHER
72	HS10803	Steel	COLLAR
73	HS1 0801	Steel	TAIL HANGER
74	HS10824	PET	CAUTION LABEL
75	HN10286	Steel	CONTACT LEVER
76	TA1 6329	Polyacetal	TRIGGER UNIT
77	FF22402	Stainless Steel	SPRING PIN 3X16(LIGHT LOAD)
78	HS70086	Aluminum,Steel	TRIGGER VALVE KIT
79	HS10828	PET	WARNING LABEL
80	HS10823	PET	NAME LABEL
81	HS70091	Nylon,Rubber	TAIL COVER UNIT
82	CN31083	Rubber	HOOK, DUST COVER
83	BB40436	Steel	HEXSOCHDCAPSCREW M6X14
84	FF31190	Steel	PIN 1190
85	HS10807	Polyacetal	SPRING COLLAR
86	BB42801	Steel	HEXSOCHDCAPSCREW M6X20
87	HS1 0822	Steel	MAGAZINE HOLDER
88	KK44024	Stainless Steel	SPIRAL SPRING 4024
89	BB40417	Steel	HEXSOCHDCAPSCREW M6X18
90	HS80029	Aluminum,PET	MAGAZINE ASSY
91	KN12420	Stainless Steel	NAIL STOPPER B
92	HS10818	Stainless Steel	NAIL STOPPER
93	CC4941 1	Steel,Nylon	SPECIAL NUT M5
94	HS10800	Stainless Steel	NAIL GUIDE A
95	KN12210	Polyacetal	NAIL GUIDE B
96	HS10806	Nylon	PUSHER HOLDER
97	GN10425	Steel	LOCK PLATE
98	FF21239	Steel	SPRING PIN 4X12
99	EE39609	Urethane	RUBBER WASHER 1.8X6X2
100	HS10805	Steel	PUSHER
101	FF31603	Steel	PIN 1603
102	KK23932	Steel	SPRING 3932
103	HS10826	Steel	BODY HANGER
104	BB40457	Steel	HEXSOCHDCAPSCREW M6X8
105	HS80031	Steel	BODY HANGER KIT
106	HS80028	Aluminum,PET,PVC,GEL	FRAME ASSY
107	HS70087	Steel,Brass,Magnet	NOSE UNIT
108	HS80030	Rubber	O-RING KIT